
Sewing Instructions for Installing a Hidden Zipper

Zippers are an excellent closing device for fashion dolls. They are the best means for maintaining the integrity of a design. They do not add the same bulk as snaps or hook and eyes. The best zipper to use is either an invisible zipper available from most sewing stores or a tiny zipper from www.TinyZippers.com.

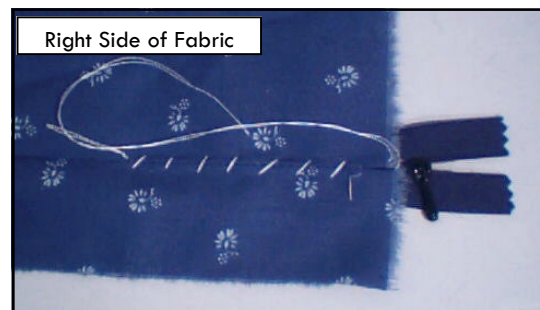
I developed the instructions below for installing a hidden zipper in the Morning Glory gown which you can see at Patterns-for-Fashion-Dolls.com. This is a center back seam and when the zipper is installed using these instructions, the stitching that holds the zipper in place cannot be seen on the outside of the garment. The “Z” mark referred to in the instructions is the bottom of the zipper closure.

These instructions have been developed to make it easy to install a hidden zipper in a fashion doll. They would not be appropriate for clothes for people because of the movement involved.

Install the Zipper

The instructions below are for installing a hidden (or tiny) zipper. The photos use uncut scraps of fabric with contrasting zipper and thread to illustrate the process.

1. Sew the two center back panels of the gown fabric, right sides together, along the center back seam from the arrow marked “Z” to the hem.
2. Machine baste from the top of the center back to the arrow marked “Z.” Use a long stitch. This basting will hold the center back closed while the zipper is installed.
3. Clip the excess thread from the machine basting at “Z” but not from the neckline.
4. Press the center back seam open.
5. Close the zipper all the way and hand baste the zipper teeth to the inside of the center back seam. Keep the teeth centered over the seam and the basting as close as possible to the teeth.
6. With the center back panels right side up, gently pull one panel over the other to expose the center back seam allowance and the zipper fabric under it.
7. Hand baste the seam allowance to the outside edge of the zipper.
8. Repeat Steps 6 and 7 for the other center back panel.
9. With the zipper foot in your sewing machine, sew the seam allowance to the zipper. These stitches should be as close to the teeth of the zipper as your zipper foot will allow.
10. Remove all basting.



Tiny Zipper Basted to CB Seam



Zipper Basted to Seam Allowance



All Basting as Seen on Wrong Side

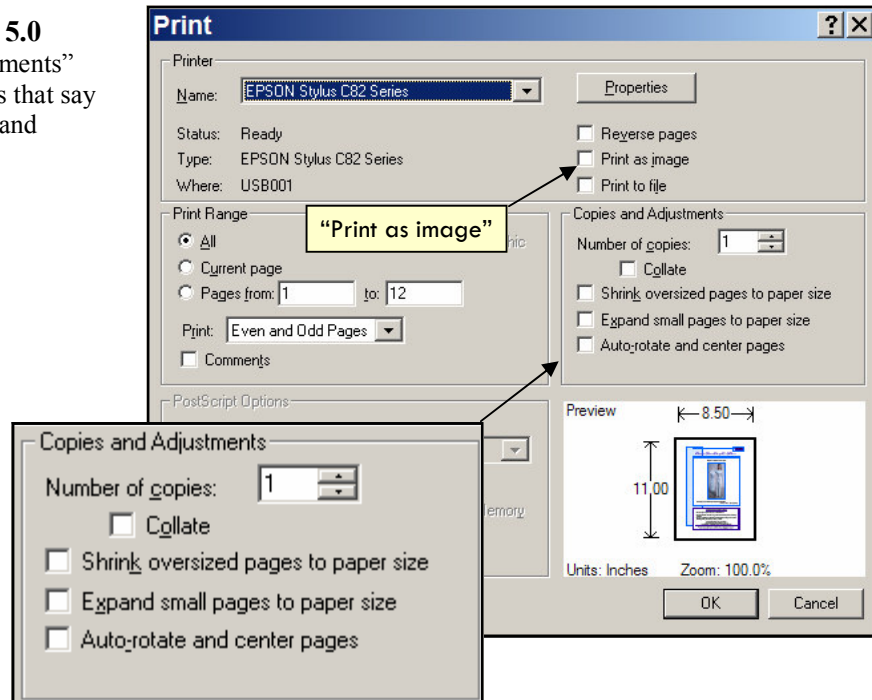
Printing PDF Files

The Adobe Acrobat print function can be set to shrink or expand pages. This will cause the patterns to be printed incorrectly. The phrasing of this function depends on the version of Acrobat that you are using. Two versions are shown below.

To verify the patterns are the correct size, measure the blue 8" x 10" (20.3cm x 25.4cm) boxes that appear around the edges of the pattern pages.

Another problem you may encounter is that the text in the sewing instructions prints additional characters. These characters do not appear when the pages are displayed. When this happens, select the "Print as image" function.

Acrobat Reader 5.0
In the "Copies and Adjustments" section, uncheck the boxes that say "Shrink oversized pages" and "Expand small pages."



Acrobat Reader 6.0 & 7.0
In the "Page Handling" section, set "Page Scaling" to "None."

To access the "Print as image" checkbox, click the "Advanced" button.

